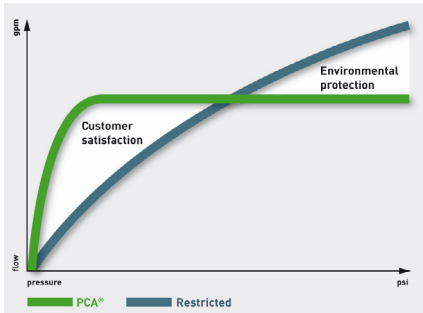


Mikado model patterned spray and flow regulator

NO PLUMBING REQUIRED | WATER & ENERGY SAVING | EVEN WATER DISTRIBUTION

Simply replace existing tap aerator or flow straightener

Neoperl Mikado | PCA® (Pressure Compensating) Model



Water consumption: as much as necessary (customer satisfaction), but only as little as possible (environmental protection).

PCA® versions provide a constant & maximum flow rate irrespective of pressure fluctuations

All Neoperl PCA® inserts are equipped with a flow regulator. The flow regulator is composed of a **colour-coded body** and a **dynamic o-ring**. The o-ring reacts to pressure change and alters its shape to adjust the amount of water flowing through the flexible gap.

Operating water pressure 1 Bar to 6 Bar

Where flow rates are stated in gallons/min (**gpm max.**) this refers to a US gallon (3.8 litre/min approx.) and the flow rate will not exceed that stated providing the water pressure is correct. Where flow rates are stated in litres/min (**l/min**) this is subject to $\pm 10\%$ deviation.

RP/Mikado PCA | Pressure Compensating Flow Regulator

The **MIKADO** turns the water stream into an eye-catcher when washing your hands. Its extraordinary, grid-like spray pattern – formed by individual water jets – creates a surprisingly clear and harmonious effect. Owing to its form the spray loses density as it moves downwards. This makes the force of the jets range from vigorously massaging to pleasantly soft.



BEAUTIFUL STREAM DESIGN

New possibilities for designers are afoot: by adjusting the geometric properties of the individual jets three different MIKADO aerator models have been created. Their stream pattern ranges from slim, close-meshed (the Uno model) to expansive (Tre).



AVAILABLE SIZES & HOUSINGS

STANDARD (STD)

Female M22

Male M24

US Female 55/64"-27 UNS-2B

US Male 15/16"-27 UNS-2A

Dual Thread 15/16"-27/ 55/64"-27

Euro Male (with side flats) 15/16"-27

Tamper-Proof Female M22 and Male M24 Housings Available Rotating sleeve construction to make the insert and housing theft-proof. Special key is required for removal.

Mikado Standard (STD) Size PCA® – Pressure Compensating Model

The pressure compensating flow regulator produces – by means of the o-ring – an almost constant flow rate regardless of pressure fluctuations.

MIKADO uno



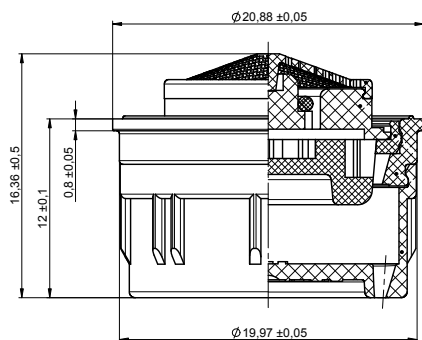
MIKADO due



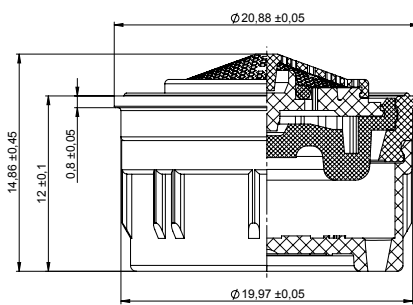
MIKADO tre



Standard (STD) Size PCA® – MIKADO uno		Order Codes		
Flow Rate Maximum US gallons/min	Colour Code	Standard (STD) Insert only	c/w Female M22 Housing & Washer	c/w Male M24 Housing & Washer
0.35 gpm max.	Brown	RP/40.7B68.000	RP/40.7B68.023	RP/40.7B68.033
0.5 gpm max.	Lime	RP/40.7B59.000	RP/40.7B59.023	RP/40.7B59.033
0.75 gpm max.	Red	RP/40.7B69.000	RP/40.7B69.023	RP/40.7B69.033
Standard (STD) Size PCA® – MIKADO due		Order Codes		
Flow Rate Maximum US gallons/min	Colour Code	Standard (STD) Insert only	c/w Female M22 Housing & Washer	c/w Male M24 Housing & Washer
0.35 gpm max.	Brown	RP/40.7C68.000	RP/40.7C68.023	RP/40.7C68.033
0.5 gpm max.	Lime	RP/40.7C59.000	RP/40.7C59.023	RP/40.7C59.033
0.75 gpm max.	Red	RP/40.7C69.000	RP/40.7C69.023	RP/40.7C69.033
Standard (STD) Size PCA® – MIKADO tre		Order Codes		
Flow Rate Maximum US gallons/min	Colour Code	Standard (STD) Insert only	c/w Female M22 Housing & Washer	c/w Male M24 Housing & Washer
0.35 gpm max.	Brown	RP/40.7D68.000	RP/40.7D68.023	RP/40.7D68.033
0.5 gpm max.	Lime	RP/40.7D59.000	RP/40.7D59.023	RP/40.7D59.033
0.75 gpm max.	Red	RP/40.7D69.000	RP/40.7D69.023	RP/40.7D69.033
1.0 gpm max.	Blue	RP/40.7D58.000	RP/40.7D58.023	RP/40.7D58.033
1.2 gpm max.	Pink	RP/40.7D60.000	RP/40.7D60.023	RP/40.7D60.033
1.5 gpm max.	Green	RP/40.7D56.000	RP/40.7D56.023	RP/40.7D56.033



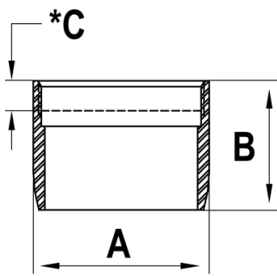
Standard (STD) Insert – 0.35 gpm to 0.75 gpm



Standard (STD) Insert – 1.0 gpm to 1.5 gpm

Neoperl® chrome housings for Standard (STD) MIKADO PCA®

Female M22 Neoperl® chrome housing dimensions for standard (STD) insert

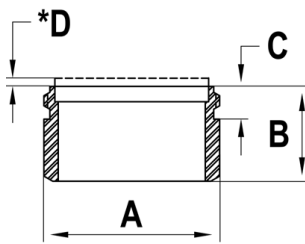


Housing Dimensions		
No	mm	Tolerance
A	23.5	± 0.05
B	17.00	± 0.10
*C	3.90	± 0.40

* Washer stick-in



Male M24 Neoperl® chrome housing dimensions for standard (STD) insert



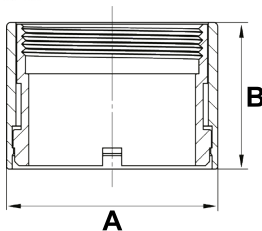
Housing Dimensions		
No	mm	Tolerance
A	23.90	± 0.10
B	13.00	± 0.10
C	4.50	± 0.10
*D	1.25	± 0.25

* Washer stick-out



Female M22 Neoperl® tamper proof chrome housing dimensions for standard (STD) insert

Tamper proof housings require a special key (RP/BX.011C.1) for fitting and removal



Housing Dimensions – Regular Vandal Proof		
No	mm	Tolerance
A	25.50	+ 0.25 / - 0.25
B	17.60	+ 0.25 / - 0.25

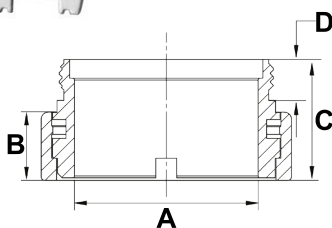


Female M22 tamper proof housings. Part no.: 40.xxxx.513 (xxxx depending on insert)



Male M24 Neoperl® tamper proof chrome housing dimensions for standard (STD) insert

Tamper proof housings require a special key (RP/BX.011C.1) for fitting and removal



Housing Dimensions – Regular Vandal Proof		
No	mm	Tolerance
A	20.14	+ 0.51 / - 0.51
B	7.49	+ 0.51 / - 0.51
C	13.28	+ 0.51 / - 0.51
D	4.50	+ 0.25 / - 0.25



Male M24 tamper proof housings. Part no.: 40.xxxx.523 (xxxx depending on insert)



ROBERT PEARSON & COMPANY LTD

Post Office House, Post Office Lane
Stockton, Warminster
Wiltshire BA12 0SE

Telephone: (01985) 850954

Facsimile: (01985) 850112

E-Mail: sales@robertpearson.co.uk

Website: www.robertpearson.co.uk